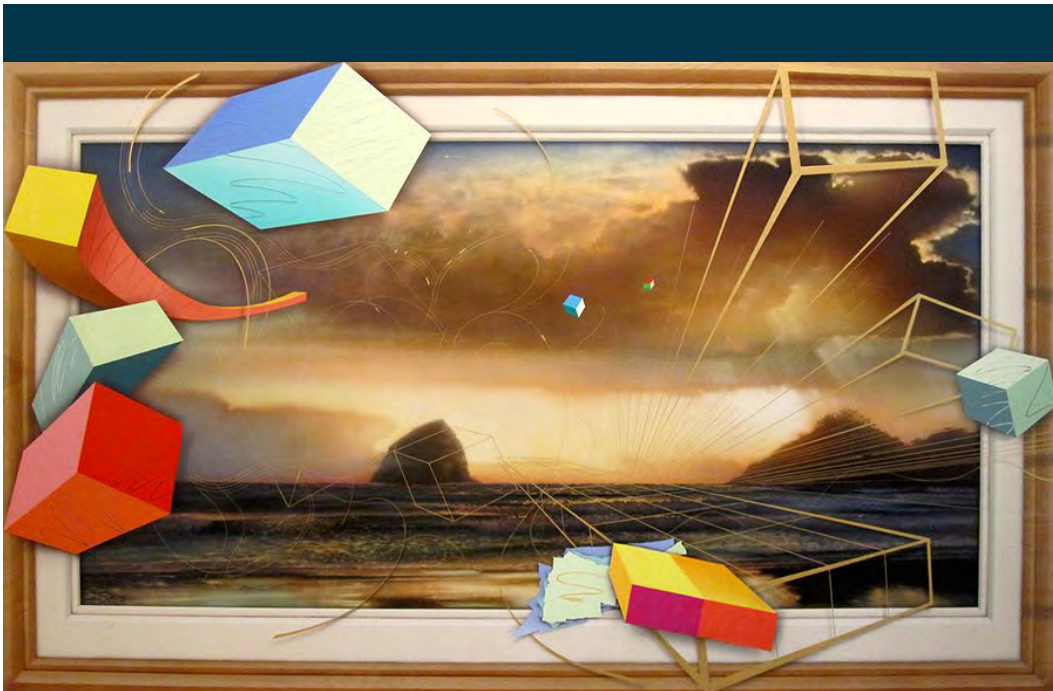




TROMP L'OEIL ILLUSION



Haystack Rock: The Architecture of Life Everlasting | 48" x 48" acrylic/birch | 2015

BOARD OF DIRECTORS

2016





JERI HISE, Executive Director

Jeri D. Hise is an artist and educator and a founding member of Inklings Printmaking Studio in Portland, Oregon. She has taught classes at several private schools in the northwest, as well as the Tribeca Montessori School in NYC, and the print studios at Smith College.

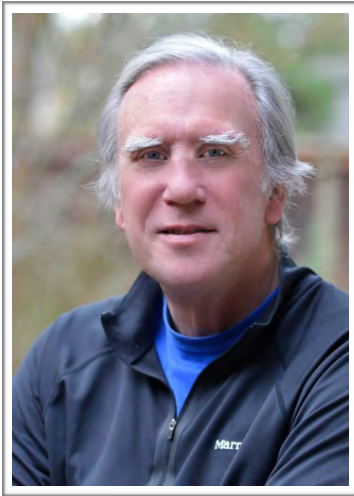
She exhibits widely in the northwest and holds a BFA degree in Art History and Studio Art from Smith College.



DAN BIGGS, Board Member

Dan Biggs was the Past Chairman of the Board of the Portland Art Museum and Past Board member of the Portland Opera. He is also the founding president of Millennium Pictures and a co-founder of the Portland Creative Conference.





REAGAN RAMSEY, Board Member

Reagan Ramsey, New Media Developer and Television News Executive (former news director at KGW). As a leading innovator in Interactive Media, Reagan has been responsible for the design and creation of campaigns for broadcast media clients.

Reagan works directly with program producers, focusing on the design of interactivity that enhances and extends contact with the audience. In his television news and entertainment work, he lived in London working as an international television consultant, concentrating on new channel startups, strategic planning, journalist training and new media development. With television production background, he was News Director for KGWTV, an NBC affiliate.



NED PREBLE, Board Member

Ned Preble is on the Faculty of Capella University, teaching in the Business School courses in Change Management, Strategy and Planning. He has lectured at Yale, Harvard and U of Chicago. As the Managing partner at Synectics he guided a multinational consultancy that helped clients develop and implement solutions for new strategies, research, products and marketing plans.

He is a graduate of Wesleyan University in Connecticut and has a MBA from Wharton Business School. He has been a Board Member of various Colleges and Philanthropic organizations and is and active member of Rotary International.





BARBARA CORDEN, Board Member

As the eldest child in a family of ten, Barb learned very early on the importance of personal expression, organization and careful selection. This core experience formed her diligence and sense of style. Her daily routine consists of managing four businesses and interacting with over fifty University students as tenants, as well as a variety of local political and civic activities.

Self admittedly, through good fortune, she is a Philanthropist, a passionate gardener, collector of art and deft hostess. Barb shares a connection of time and place with George through Corvallis, Neskowin, Portland and New York. "He has recognized in me a kindred spirit, and honored me with his request to participate in this intriguing and provocative project, the George D Green Institute."



JANE RAMSEY, Board Member

Jane is a retired elementary and art education teacher. With a BS from Oregon State University, she went on to Western Oregon University where she specialized in early childhood and art education.

Jane has a diverse background of work experience beginning with working for a graphic designer. She then worked at the Children's Museum designing, promoting and teaching TAG programs for Portland area public schools and the OMSI energy outreach program. Her teaching style was greatly influenced by being a member of Annie Painter's Gresham Summer Art Institute. At this institute, she designed and taught art education curriculum. Being an early adopter of the Scottish Story Line method, Jane interwove these concepts into her teaching.

