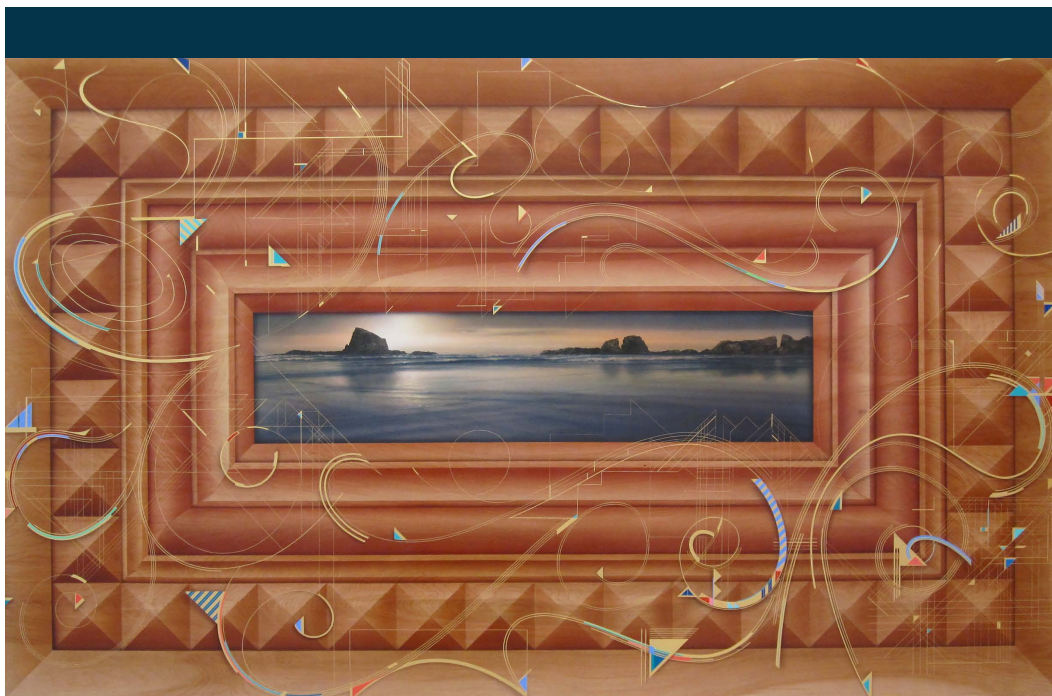




TROMPE L'OEIL ILLUSION



Rembrandt | 48" x 80" acrylic/birch | 2010

## INSTITUTE ADVISORS

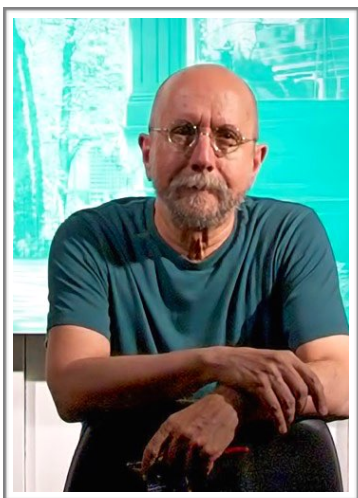
2019





## **LEIGH BEHNKE, Advisor**

Ms. Behnke is a celebrated NY painter, art educator (School of Visual Arts, NYC). Her work is extensively written about and in the collections of numerous museums. She is represented by Fischbach Gallery, NYC, and Plus One Gallery, London. Guggenheim Fellowship in 2013.



---

## **DON EDDY, Advisor**

Though historically acknowledged as the most original and important painter associated with Photo Realism, Don self-identifies correctly as a Spiritual Realist.

His works are widely shown in galleries and museums throughout the U.S. and Europe and are represented in numerous museum collections worldwide. He is represented by the Nancy Hoffman Gallery in NYC where he lives and works.

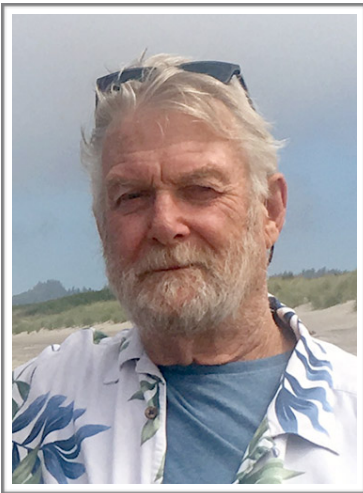




## **HEATHER HALL, Advisor**

A native Oregonian, Heather received her core education here, completing her B.F.A. at the University of Oregon. Travel and further education excited her intrigue with the uniqueness of individual perception and expression in the Arts and Architecture.

Through her 25 years of running her own Interior Design firm she enjoyed interacting, learning and synthesizing those unique wants and needs into rich personal spaces.



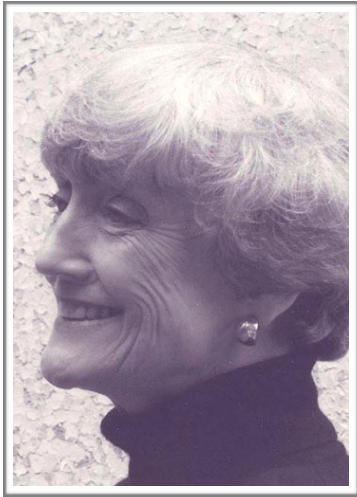
---

## **SANDY GREEN, Advisor**

Sandy Green is Founder and President of Surface Restorations, Inc., an Oregon Corporation. He is painter, contractor, facilitator, mediator, enhancer, and conflict manager. of Oregon. Fifty plus years of engagement with challenged surfaces, challenged environments, and challenged aesthetics.

Sandy brings unique solutions to unique situations. And one man bands still exist.





## **NANCY LINDBURG, Advisor**

Nancy Lindburg holds a BA in Art History and Studio Art from Mills College and a MFA in Painting and Sculpture from Cranbrook Academy of Art. She is a painter and lifelong arts advocate.

She served as Director of the Salem Art Association and then as Artist Services Coordinator for the Oregon Arts commission where she was the first to shape and manage the state's Percent for Art in Public Places Program. Her work is represented in numerous private and public collections and in 1995 she received the Governor's Arts Award.



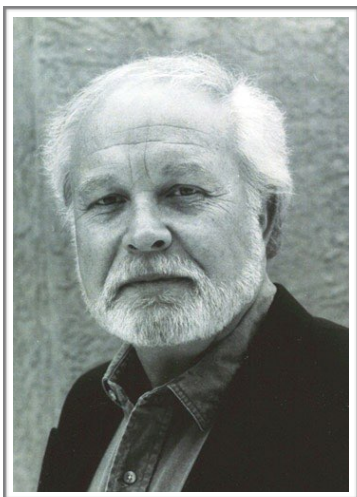
---

## **TIM LISZT, Advisor**

Tim Liszt is the creative energy behind LisZt Design, which officially launched in 2008 after 21 years working in Public Affairs and Marketing for a large city agency.

His design skills include the communication arts—branding, print design, and developing web sites for clients that are engaging and effective. All this and he sings!.





## **TERRY MELTON, Advisor**

Terry Melton, widely exhibited painter and extensively published poet and critic, was previously executive director of three museums: The Yellowstone Art Museum, The C.M. Russell Museum and the McAllen International Museum. He was Executive Director of the Oregon Arts Commission and Foundation, The Western States Arts Federation and the Regional Representative for The National Endowment for the Arts.

In past years he was Vice President of the Western Association of Art Museums and Chairman of the Oregon Planning Commission. He was Vice-Chairman of the Santa Fe Arts Commission and co-chair of the New Mexico Museum of Fine Arts. He is the recipient of numerous awards.

He lives and works in Salem, Oregon, and has a martini each evening at five.



---

## **JOHN MULLANEY, Advisor**

Tax attorney, former IRS Appeals Officer. Currently District 2 Councilor City of Braintree, MA, Chairman Ways & Means Committee, Rules & Ordinance Committee. Served on the Braintree Finance Committee, United Way Oversight Committee. Graduate Boston College, Suffolk University School of Law.







## **ANNIE PAINTER, Advisor**

Annie Painter is a former award winning Oregon elementary principal with experience as an elementary classroom teacher (kindergarten and grade six), exhibiting soft sculptor, curriculum specialist, middle and high school fine arts teacher. She spent three years as a national arts and literacy coach.

Annie continues consulting and teaching from her studio and has recently returned to a focus on her own art work, this time choosing to learn a new medium, printmaking.



---

## **PATTI WEBB, Advisor**

Patti Webb retired in 2008 as the Manager of the McMinnville Downtown Association. In the 14-1/2 years there, she produced a summer brown bag concert series, created a steering committee, which began a very successful downtown farmer's market, recruited several new businesses and doubled the business memberships.

In 2014 McMinnville came in second as the Best Main Street in America sponsored by Parade Magazine.